



# INSTRUCTION BULLETIN

No. 340805  
Machine: 5700 XP  
Published: 04-2006  
Rev. 01

**NOTE: DO NOT DISCARD the Parts List from the Instruction Bulletin. Place the Parts List in the appropriate place in the machine manual for future reference. Retaining the Parts List will make it easier to reorder individual parts and will save the cost of ordering an entire kit.**

*NOTE: Numbers in parenthesis ( ) are reference numbers for parts listed in Bill of Materials.*

Installation instructions for **kit number 9002011**

## SYNOPSIS:

This kit contains the parts needed to install a charger interlock kit on the 5700 XP machine.  
Please follow step-by-step instructions.

**SPECIAL TOOLS / CONSIDERATIONS:** Depending on the type batteries used, it may be necessary to reposition the foam battery spacers and move batteries slightly forward to clear the switch bracket.

(Estimated time to complete: 1 hour)

## PREPARATION:

1. Park the machine on a clean level surface, turn off the machine, set the parking brake (if equipped), and remove the key.

**FOR SAFETY:** Before leaving or servicing machine, stop on level surface, turn off machine, set parking brake (if equipped), and remove key.

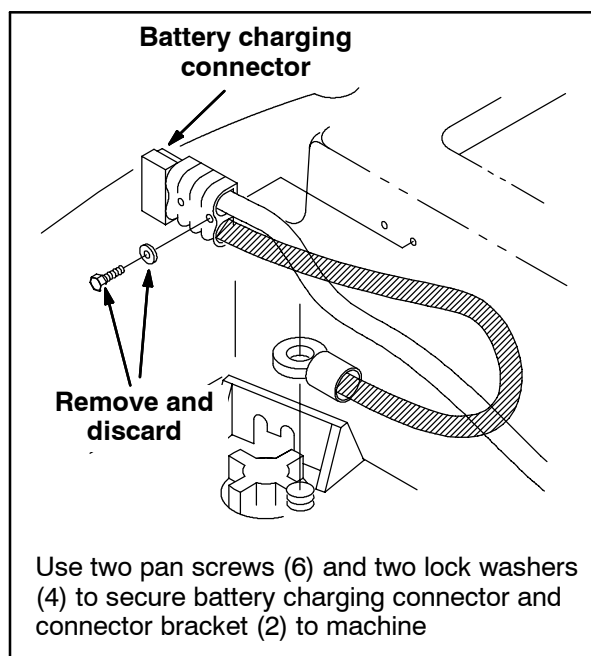
2. Disconnect the battery cables from the batteries.



**WARNING:** Always disconnect battery cables from machine before working on electrical components.

## INSTALLATION:

1. Remove the battery charging connector from the machine. Discard the hardware removed from the connector. Refer to Fig. 1.



**FIG. 1**

2. Use two pan screws (3), two lock washers (4), and two hex nuts (5) to install the switch (2) and the plate (8) onto the connector bracket (1). Refer to Fig. 2.

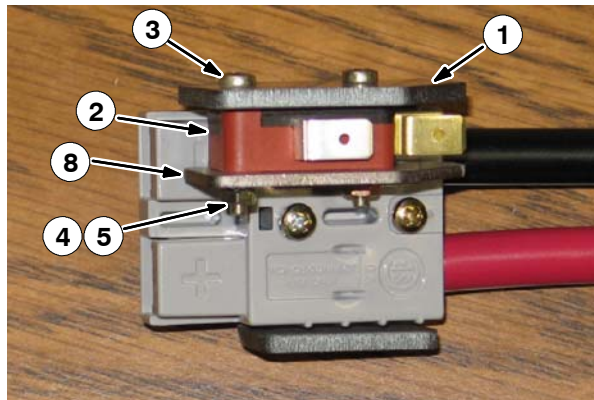


FIG. 2

3. Connect the jumper harness (7) to the switch (2). Refer to Fig. 7.
4. Position the battery charging connector into the connector bracket (1) and use two pan screws (6) and two lock washers (4) to secure the battery charger connector and connector bracket to the area of the machine where the battery charging connector was previously installed. Refer to Fig. 1.
5. Remove the hardware holding the rear panel to the machine and pull the rear panel open. Set the hardware aside. Refer to Fig. 3.

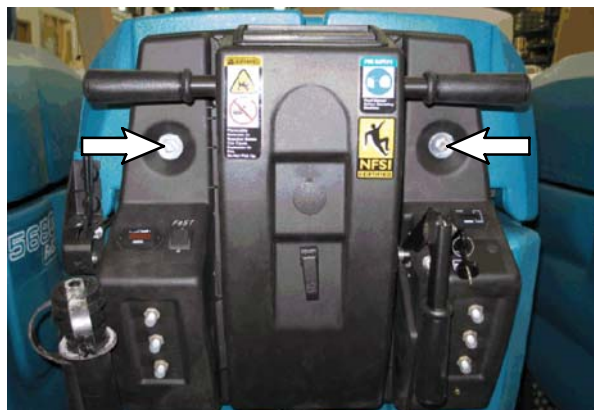


FIG. 3

6. Route the other end of the jumper harness (7) along the main wire harness, through the hole in the back of the battery compartment, and to the rear panel. Refer to Fig. 4.

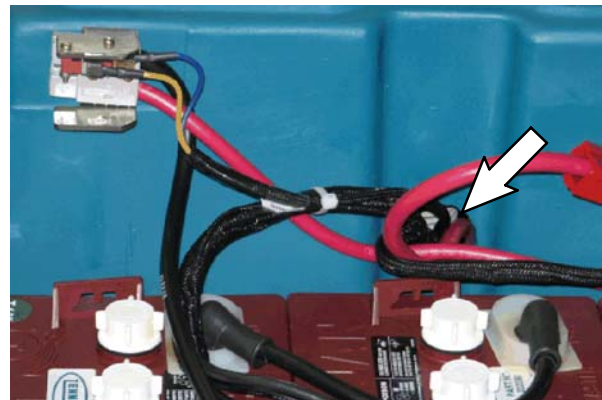


FIG. 4

7. **Non-CE machines only:** Disconnect wire 5/Orange of the main wire harness from wire 9/Green of the main wire harness. Remove and discard the clear sleeve covering these connectors. Refer to Fig. 5.

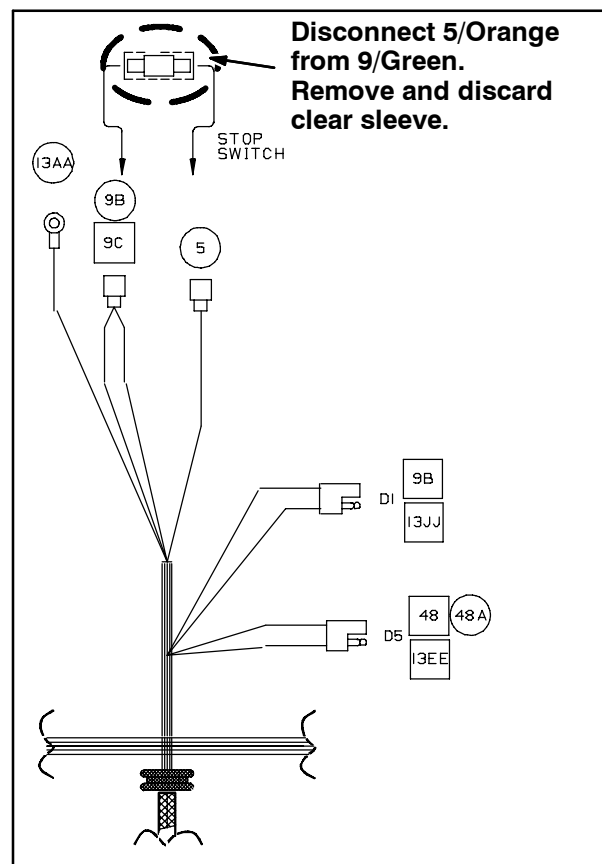
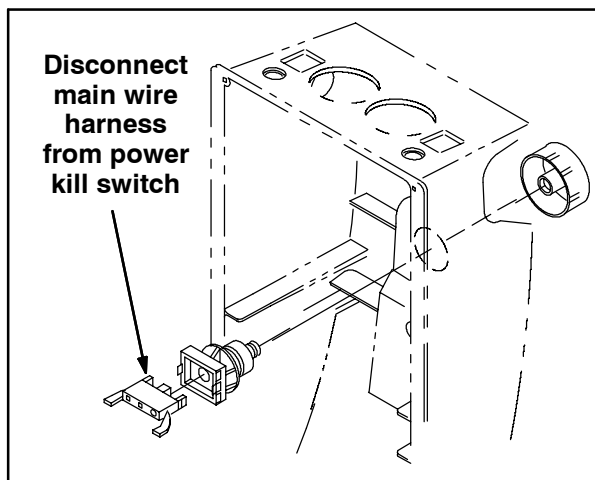


FIG. 5

**CE machines only:** Disconnect the main wire harness from the power kill switch located on the operator console. Refer to Fig. 6.



**FIG. 6**

8. **Non-CE machines only:** Connect the jumper harness (7) to the main wire harness. Refer to table below for wire locations. Wrap electrical tape around the unused connector on the (E) 6 in. blue wire and tie off. Refer to the table below and Fig. 7.

Jumper Harness (7) Wire Locations on Main Wire Harness	
Jumper Harness Wires	Location
(E) 6 in. Blue (female)	Not Used
(D) Blue (male)	9/Green
(C) Yellow (male)	5/Orange

**CE machines only:** Connect the jumper harness (7) to the main wire harness and the power kill switch. Wrap electrical tape around the unused connector on the (D) blue male wire and tie off. Refer to the table below and Fig. 7.

Jumper Harness (7) Wire Locations on Main Wire Harness and Power Kill Switch	
Jumper Harness Wires	Location
(E) 6 in. Blue (female)	Power Kill Switch
(D) Blue (male)	Not used
(C) Yellow (male)	5/Orange
9/Green (female)	Power Kill Switch

9. Neatly bundle the excess length of the jumper harness (7) and insert it with the main wire harness in the cable clamp attached to the electrical plate.
10. Connect the battery cables to the batteries.
11. Plug the the battery charger into the battery charging connector. There should be no power to the machine when charger is attached to the machine. If necessary, loosen the hardware (3) (5) and adjust the position of switch (2).

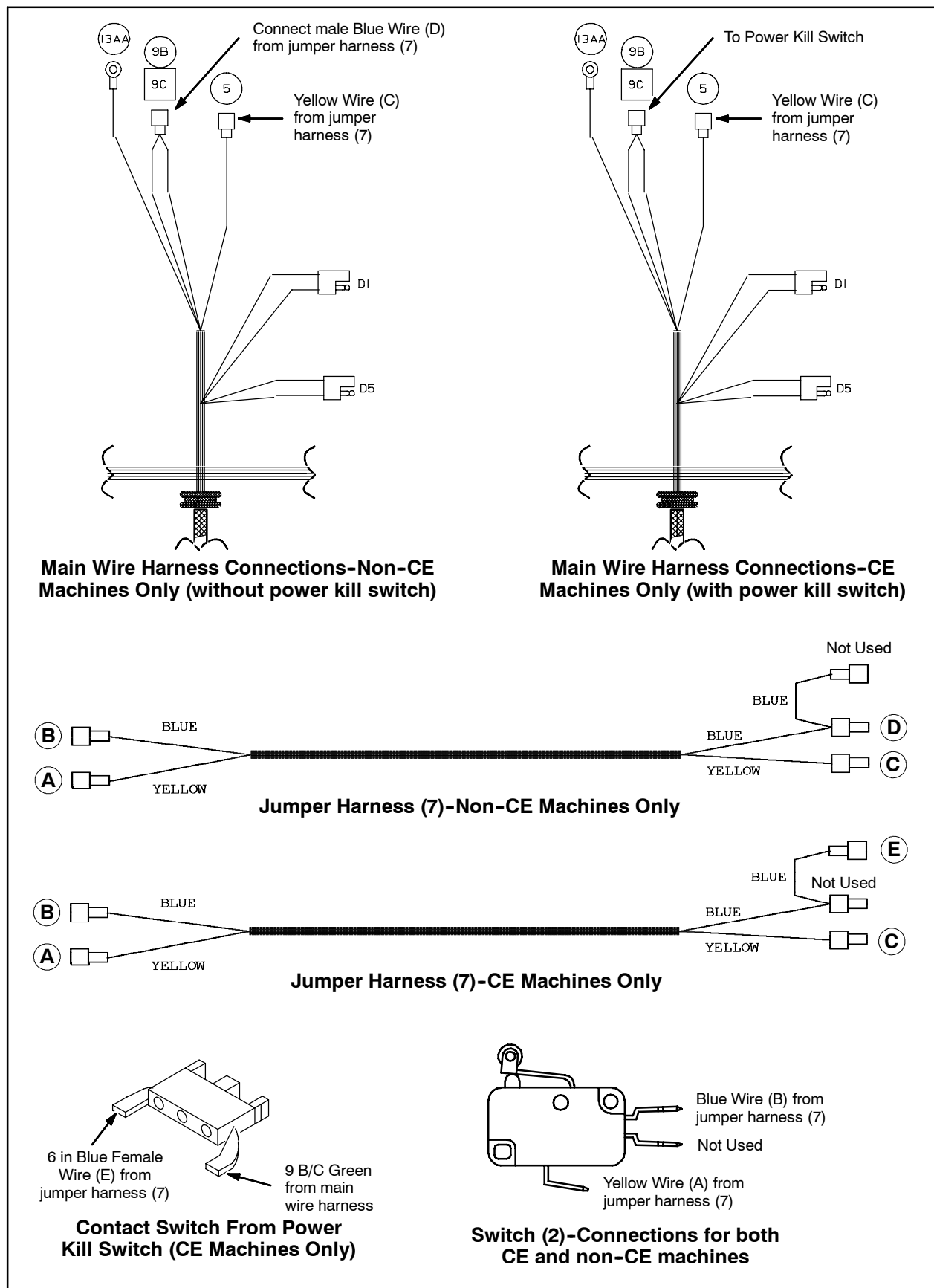


FIG. 7

---

**Bill of Materials for Kit, Charging, CI, [Interlock] [5700 XP]-9002011**

	<b>Ref.</b>	<b>Tennant Part No.</b>	<b>Description</b>	<b>Qty.</b>
▽		9002011	Kit, Charging, CI, [Interlock] [5700 XP]	1
▲	1	1028907	Bracket, Connector, [5700 XP]	1
▲	2	600437	Switch, Snap Act, 250VAC 16A Rlr	1
▲	3	06922	Screw, Pan, M3 X 0.5 X 20, 4.8	2
▲	4	01757	Washer, Lock, Int, M3 SS	4
▲	5	01754	Nut, Hex, Std, M3 X 0.5, 8	2
▲	6	06923	Screw, Pan, M3 X 0.5 X 25, 4.8	2
▲	7	1029442	Harness, Adapter, [Interlock]	1
▲	8	1030332	Plate, Switch, Guard	1

TENNANT COMPANY  
P. O. Box 1452  
Minneapolis, MN 55440-1452